

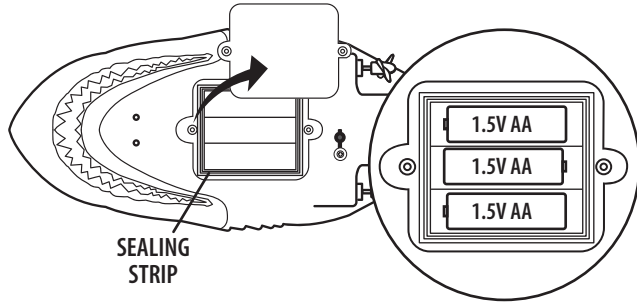
# TrickShark™ Remote Control Shark User's Manual

3+

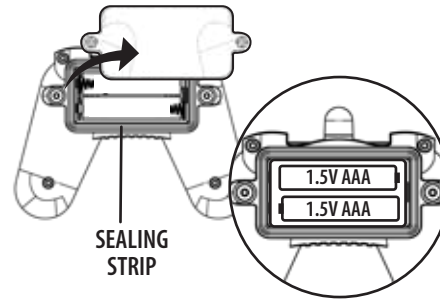
**WARNING:**  
CHOKING HAZARD - Small parts.  
Not for children under 3 years.

## BATTERY INSTRUCTIONS:

REQUIRES 3 X 1.5V AA & 2 X 1.5V AAA BATTERIES (NOT INCLUDED)



- Locate and open the battery compartment cover under the Shark Boat.
- Insert 3 X 1.5V AA batteries with polarities matching battery compartment markings.
- Close battery cover and secure screws.
- **Reminder: sealing strip MUST be in place to prevent water leaking.**

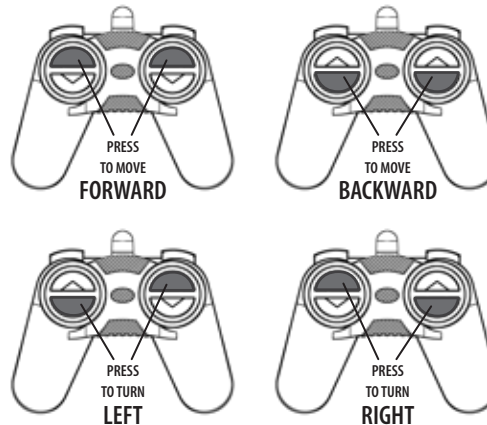
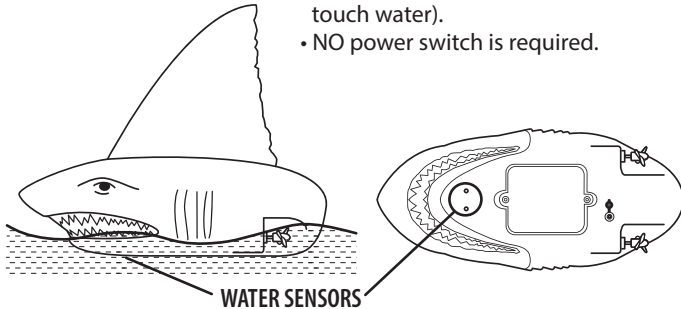


- Locate and open the battery compartment cover behind the Controller.
- Insert 2 X 1.5V AAA batteries with polarities matching battery compartment markings.
- Close battery cover and secure screws.
- **Reminder: sealing strip MUST be in place to prevent water leaking.**

## TO PLAY:

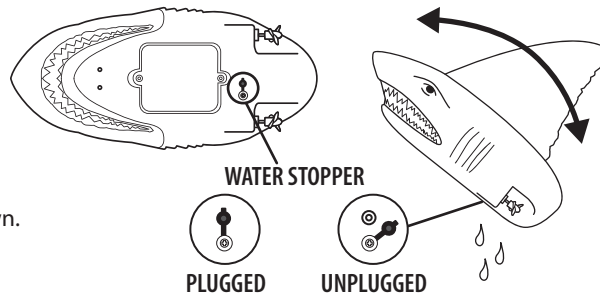
### AUTO POWER ON

- Automatically turns on when Shark Boat hits the water (WATER SENSORS touch water).
- NO power switch is required.



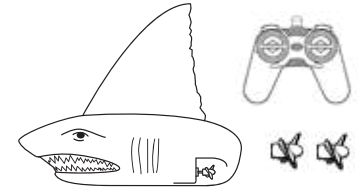
## CARE INSTRUCTIONS:

- Wipe clean, remove batteries and store when not in use.
- Always keep hands away from propellers.
- Check and drain excess water for best performance.
  1. Unplug WATER STOPPER.
  2. Drain water by gently shaking Shark Boat rear pointing down.
  3. Plug the WATER STOPPER back in place.



## CONTENTS:

- Shark Boat
- Controller
- Replacement propellers (2)
- User's manual



## REPLACING PROPELLERS:



**Only to be performed by an adult.**

1. Remove batteries from Shark.
2. Pull off old propeller.
3. Push in new propeller.

## BATTERY WARNING:

- Do not mix alkaline, standard (carbon-zinc), or rechargeable batteries.
- Do not mix old and new batteries together.
- Do not dispose of batteries in fire. Leakage, explosion and/or personal injury may occur.
- Dispose of batteries properly.
- Always remove the batteries from the battery box when not in use for extended periods.
- Only an adult should charge rechargeable batteries.
- Only use batteries of the same or equivalent type as recommended.
- Only insert batteries with the correct polarity.

**NOTE:** This equipment has been tested and found to comply with the limits for a Class B digital device, pursuant to part 15 of the FCC Rules. These limits are designed to provide reasonable protection against harmful interference in a residential installation. This equipment generates, uses and can radiate radio frequency energy and, if not installed and used in accordance with the instructions, may cause harmful interference to radio communications. However, there is no guarantee that interference will not occur in a particular installation. If this equipment does cause harmful interference to radio or television reception, which can be determined by turning the equipment off and on, the user is encouraged to try to correct the interference by one or more of the following measures:

- Reorient or relocate the receiving antenna.
- Increase the separation between the equipment and receiver.
- Connect the equipment into an outlet on a circuit different from that to which the receiver is connected.
- Consult the dealer or an experienced radio/TV technician for help.

This device complies with part 15 of the FCC Rules. Operation is subject to the following two conditions: (1) This device may not cause harmful interference, and (2) this device must accept any interference received, including interference that may cause undesired operation.

Any changes or modifications not expressly approved by the party responsible for compliance could void the user's authority to operate the equipment.

This device contains licence-exempt transmitter(s)/receiver(s) that comply with Innovation, Science and Economic Development Canada's licence-exempt RSS(s). Operation is subject to the following two conditions:

1. This device may not cause interference.
2. This device must accept any interference, including interference that may cause undesired operation of the device.

Model: #1040

Please retain this manual for future reference.  
Color and contents may vary.

Consumer Information

1-951-371-5564  
support@treehouse-kids.com

MADE IN CHINA